



**New Split Traffic Pattern Through Work Zone
Westbound US 36 between Federal and Sheridan Boulevard
Sunday, Jan. 25**

What: Three lanes of traffic on westbound US 36 will realign to create a work zone between lanes for approximately one mile from Federal to Sheridan Boulevard. During the realignment, two lanes will be on the left and one lane on the right of the work zone (see Figure 1). They will reconnect back to the original alignment prior to the Sheridan Boulevard off-ramp (see Figure 2).

Traffic entering westbound US 36 from the Federal Boulevard on-ramp will merge with traffic traveling in the right lane.

After Lowell Boulevard bridge, the three lanes will reconnect, at which point the alignment will return to its established pattern. Traffic in the right lane will either exit at Sheridan Boulevard or transition over to the two left lanes to continue westbound on US 36. Likewise, traffic in the left two lanes will have to transition to the right lane to exit at Sheridan Boulevard.

When: Beginning Sunday, Jan. 25 and continuing for several months

Why: To construct an overhead tolling sign structure

Fig. 1

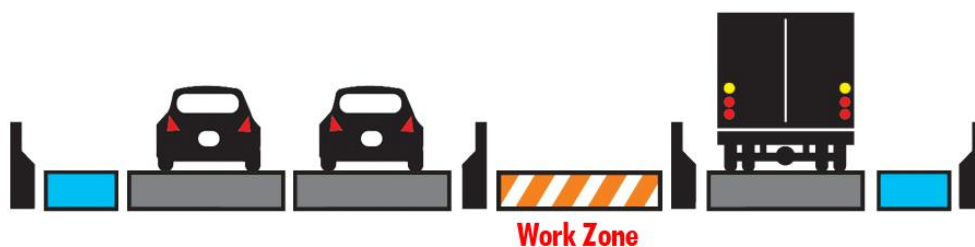
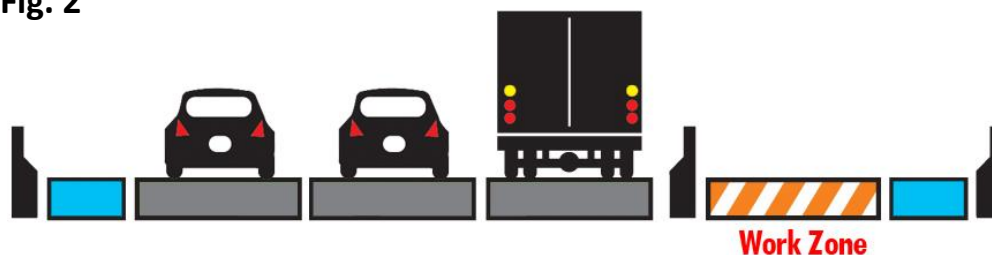


Fig. 2



For more information visit www.us36expresslanes.com or call the project hotline at 303-404-7042.

